

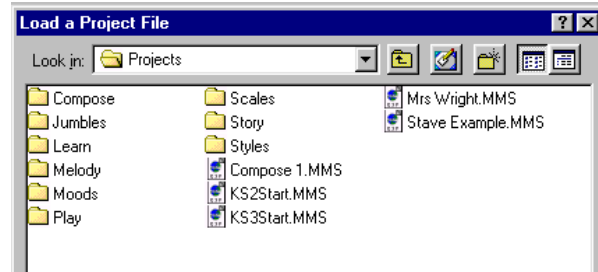
MUSIC AND ICT - COMPOSE WORLD 2



There are over 60 projects files to explore! Additional files are being added all the time, some of which are available for download from the ESP web site. www.ESPMusic.co.uk/

- Choose "File"
- Choose "Open Project"

The **Compose** and **Melody** files all contain phrases with single parts. These are ideal for writing songs and simple musical patterns.



The most popular are the Chinese and Egyptian themes

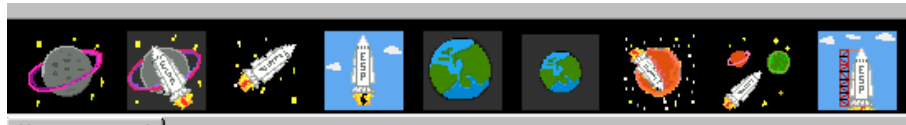


Some of the phrases in **Moods** and **Story** contain more complex phrases that can be used to conjure up a mood or style.

Midnight



Rocket



There is also a section of Jumbled up tunes for you to unjumble! This, however, is very difficult if you do not know the tune! Popular **jumbles** are the Teddy Bears Picnic and Jingle Bells but still present quite a challenge.



'Learn' contains chords and harmony.



Apart from a space theme, 'Scales' has phrases that uses notes set in the range of pentatonic, chromatic scales, including an Indian Raga.



You can find baroque, calypso and folk in the **Styles** folder.



EGYPTIAN MUSIC!

- Click on file
- Click Open Project
- Open the first folder "Compose"
- Choose Compose 6 Egyptian



Task

Make up a tune using 8 phrases adding percussion accompaniment

- Listen to all the phrases.
- Think about how your tune will start and end.
You do not have to use all the phrases. Choose your favourite phrases.
- Create your tune. Listen to your tune. Does it have a good ending?
- Choose your percussion sounds carefully.
- You do not need to use all the percussion instruments! Try repeating your favourite sounds.
- You may want to change the instruments. Look in the instrument section.
- Do not forget to save your work!

For more information and support about music software contact Christine Wright at the Music Service. Christine.wright.southglos.gov.uk