



Compose World 2 is a versatile music sequencer with many features that help the musical composition and creative process. Musical sequences are created using short phrases of music as building blocks. A sequence can contain multiple tracks of phrases with full control over tempo and volume and other effects.

**Tips to get you started!**

# Compose World 2

## Contents

Getting Started.....	Pg. 3
Adding Rhythms.....	Pg. 4
Choosing an Instrument.....	Pg. 5
Changing the Tempo (speed).....	Pg. 6
Changing the Phrase Display.....	Pg. 7
More Display Changes.....	Pg. 8
Using Rests.....	Pg. 9
Exploring the Project Files.....	Pg. 10 - 11
Egyptian Music.....	Pg. 12
Chinese Music.....	Pg. 13
Indian Music.....	Pg. 14
Space Music.....	Pg. 15
Moody Music.....	Pg. 16
Jumbles .....	Pg. 17

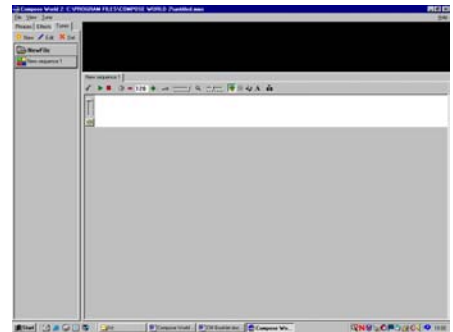
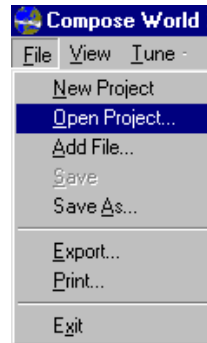
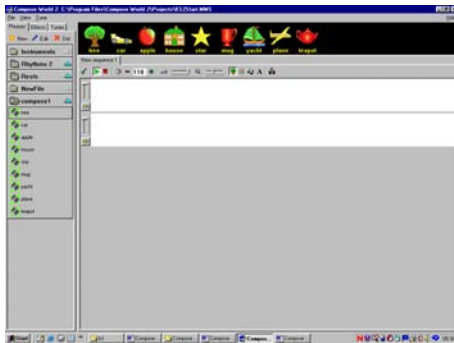
Notes compiled by Christine Wright  
Music Consultant for South Gloucestershire



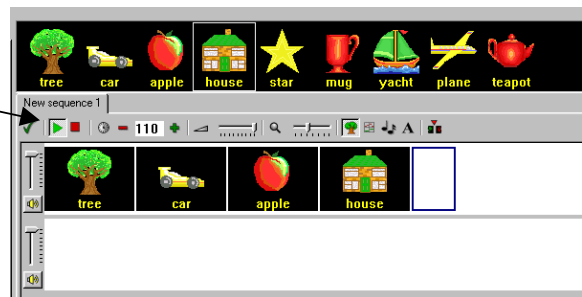
# Compose World 2

## Getting Started

- Go to “File”
- Choose “Open Project”
- Choose “KS2StartMMS”



- Double click on each picture. You should hear some phrases of music. (Are the speakers turned on?)
- To create a tune you need to move the phrases (pictures) to the top track **Drag and drop 8 phrases using the mouse.**
- To remove a phrase simply drag it back where it came from or use the delete key on your keyboard.
- To listen to your tune, click on the green triangle.
- To stop your tune, click on the red square.



**Do you like your tune?**

**What could you do to change it?**

**Would the phrases work better in a different order?**

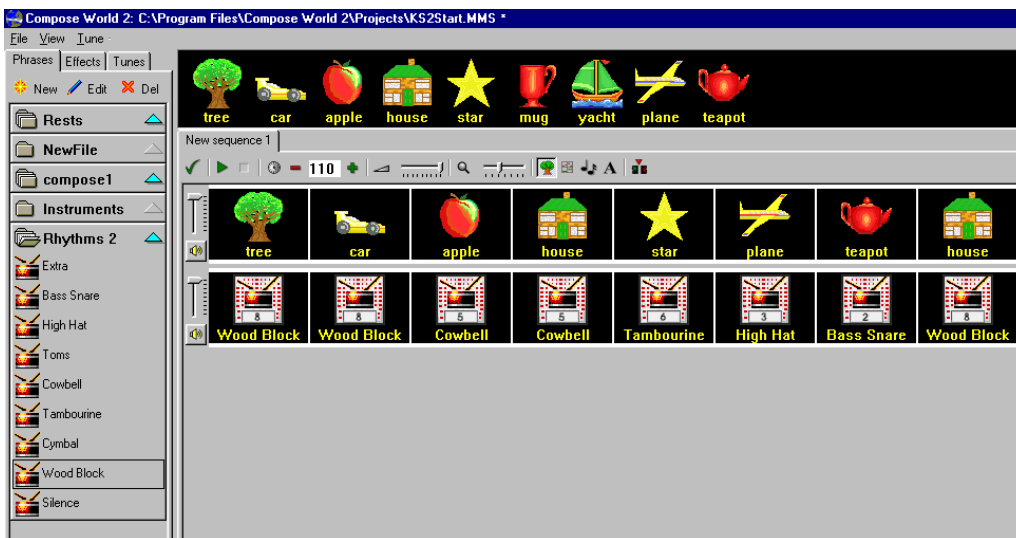
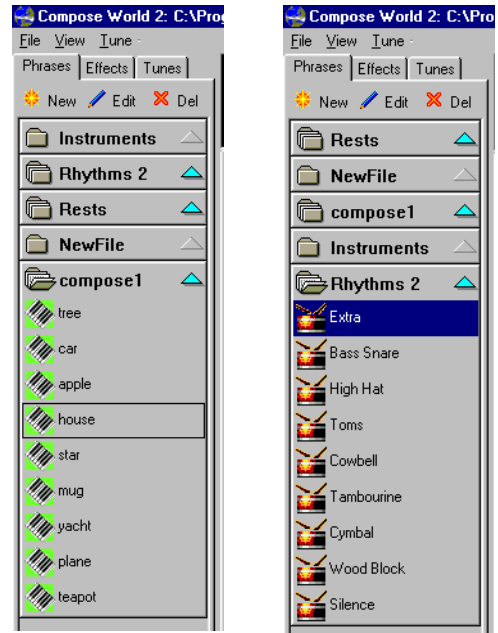
**What happens when you use the same phrase twice?**

**Does your tune have a good ending?**

# Compose World 2

## Adding Rhythms

- Look at the browser and click on the file containing the **Rhythms 2**
- Listen to the different types of rhythms and instruments.
- You can drag the rhythm patterns onto the empty track to accompany the melodic phrases above.



Listen to your tune with the rhythm patterns.

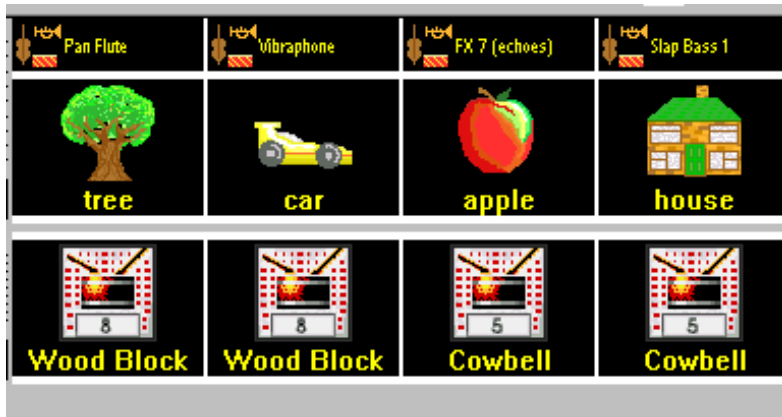
Do you want to change any of your choices?

- To change your choice, click on the rhythm and simply drag and release it over the pictures or use the delete button on the keyboard.
- You do not have to use all the rhythms! Be selective!
- You may want the rhythms to carry on after the tune has finished.

# Compose World 2

## Choosing an Instrument

- Look at the browser and click on the file containing **Instruments**.  
A selection of instruments will be displayed.
- Listen to the different types of instruments.
- Drag the instrument name you want to the track and drop it on one of the phrases (pictures) in the track. The instrument will be displayed over the phrase.



- To change your choice, click on the rhythm and simply drag and release it over the top sample of pictures or use the delete button on the keyboard.

You do not have to use all the instruments – you may decide to use only use one!

# Compose World 2

## Changing the Tempo (speed)

Changing the tempo of a tune can make quite a difference to the effect or mood of the tune.

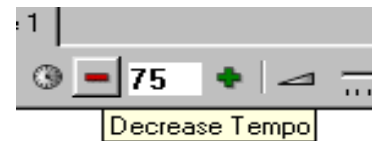
It can also be easier to sing to if the tune is played slower.



↑  
A number in the play bar represents the tempo e.g. 110

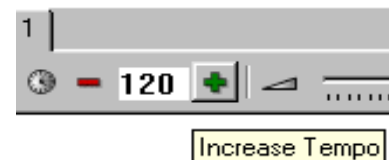
To make the tune play **slower**:

- Click on the red **-** sign to make the number smaller e.g. 75



To make the tune play **faster**

- Click on the green **+** sign to make the number larger e.g. 120



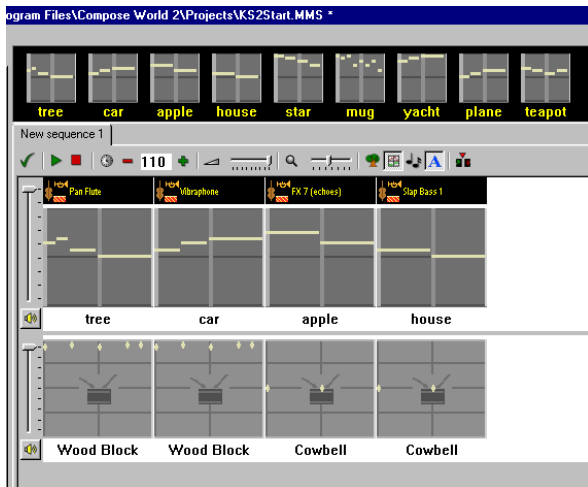
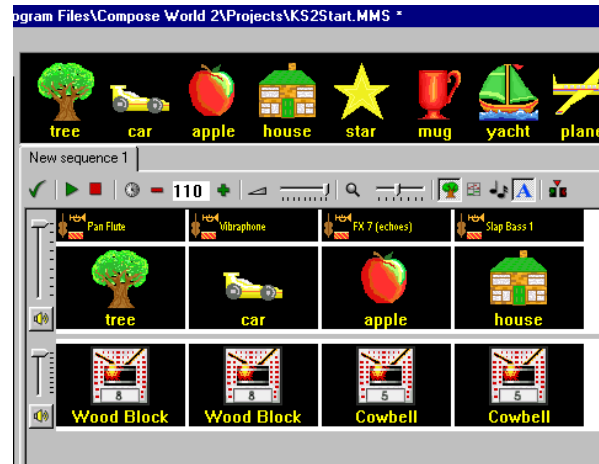
- Explore different tempos until you feel you have the right one for your tune.

# Compose World 2

## Changing the Phrase Display

Your tune can be displayed in different ways. Use the buttons on the play bar to change your display.

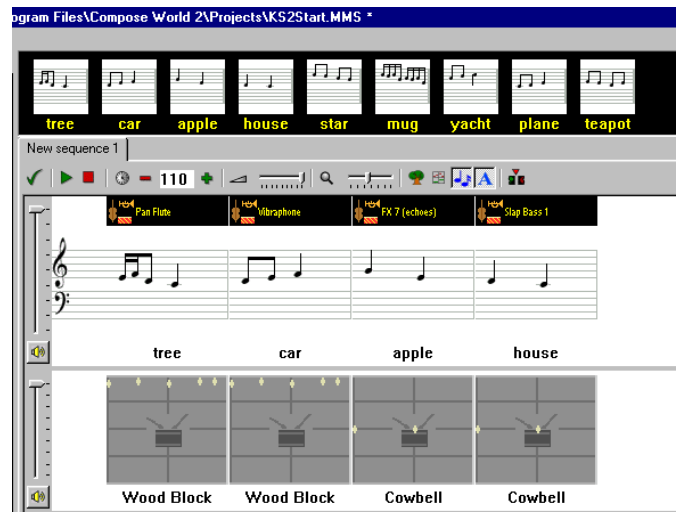
### Picture



### Grid



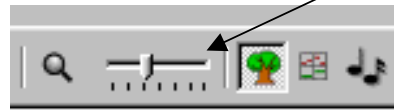
### Stave



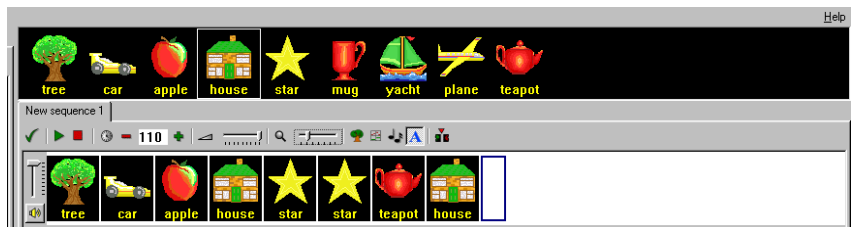
# Compose World 2

## More Display Changes

In order to see the displays more clearly, you can increase/decrease the zoom scale of the display using the scale slider

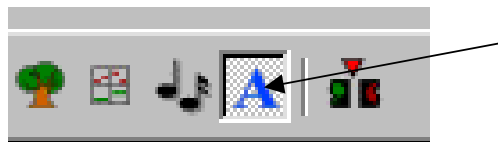


Zoom in/Zoom out

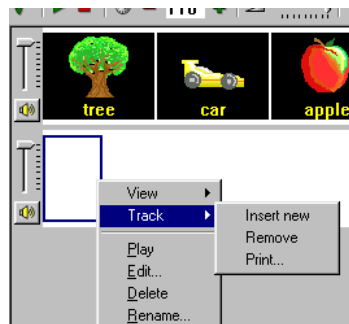


Each phrase has a name associated with it. You can choose whether this is displayed or not. You can also rename a phrase with a new name of your choice.

Click on the letter "A"



Do you want to add more tracks? In the space below the existing track right click to reveal a menu. Choose Track – Insert new.



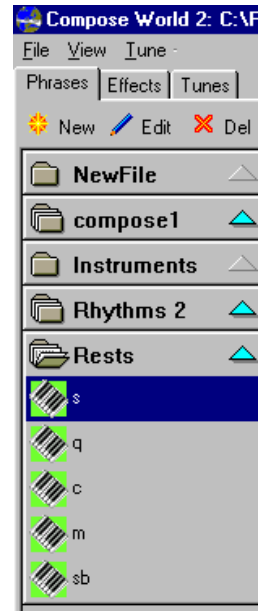
# Compose World 2

## Using Rests

If you would like a gap in a track when nothing plays then you can use a **rest**.

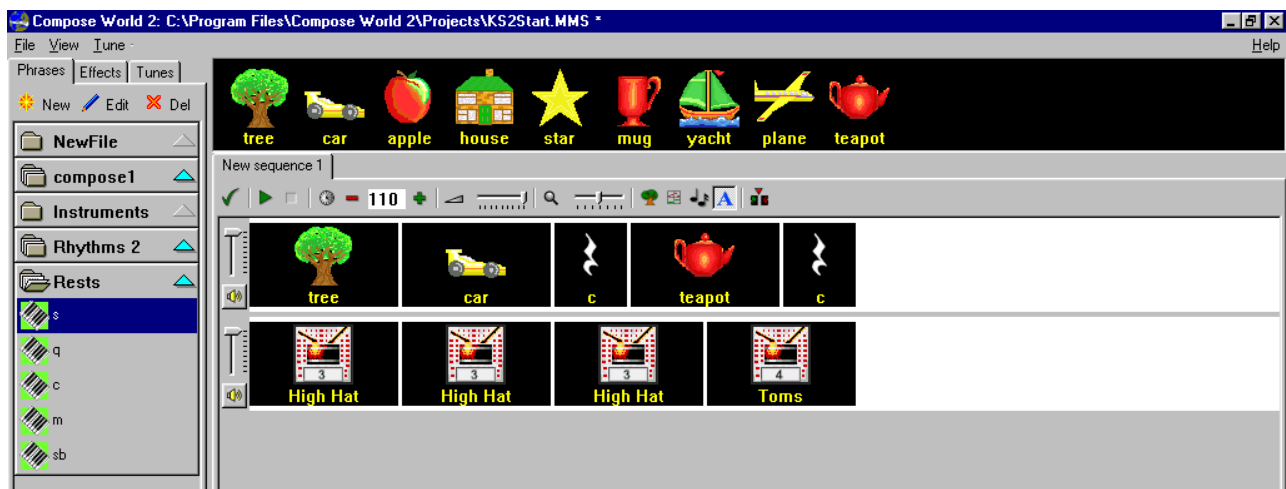
- Look at the browser and click on the file containing the **Rests**
- Some rests are quite short and others are quite long!

1. is the shortest!



The rests are named as follows:

1. s semi-quaver
2. q quaver
3. c crotchet
4. m minim
5. sb semi-breve



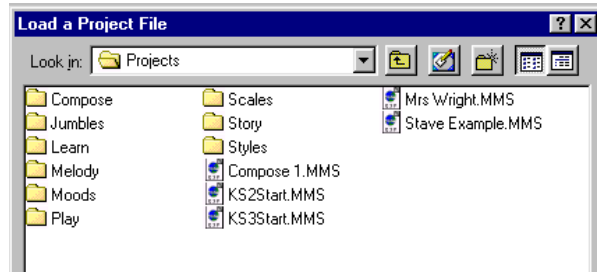
# Compose World 2

## Exploring the Project Files

There are over 60 projects files to explore! Additional files are being added all the time, some of which are available for download from the ESP web site. [www.ESPMusic.co.uk/](http://www.ESPMusic.co.uk/)

- Choose “File”
- Choose “Open Project”

The **Compose** and **Melody** files all contain phrases with single parts. These are ideal for writing songs and simple musical patterns.



The most popular are the Chinese and Egyptian themes



Some of the phrases in **Moods** and **Story** contain more complex phrases that can be used to conjure up a mood or style.

Midnight



Rocket



# Compose World 2

## Exploring the Project Files

There is also a section of Jumbled up tunes for you to unjumble! This, however, is very difficult if you do not know the tune! Popular **jumbles** are the Teddy Bears Picnic and Jingle Bells but still present quite a challenge.



‘Learn’ contains chords and harmony.



Apart from a space theme, ‘Scales’ has phrases that uses notes set in the range of pentatonic, chromatic scales, including an Indian Raga.



You can find baroque, calypso and folk in the **Styles** folder.



# Compose World 2

## Egyptian Music



- Click on file
- Click Open Project
- Open the first folder “Compose”
- Choose Compose 6 Egyptian

### Task

#### Make up a tune using 8 phrases adding percussion accompaniment

- Listen to all the phrases.
- Think about how your tune will start and end.  
You do not have to use all the phrases. Choose your favourite phrases.
- Create your tune. Listen to your tune. Does it have a good ending?
- Choose your percussion sounds carefully.
- You do not need to use all the percussion instruments! Try repeating your favourite sounds.
- You may want to change the instruments. Look in the instrument section.
- Do not forget to save your work.

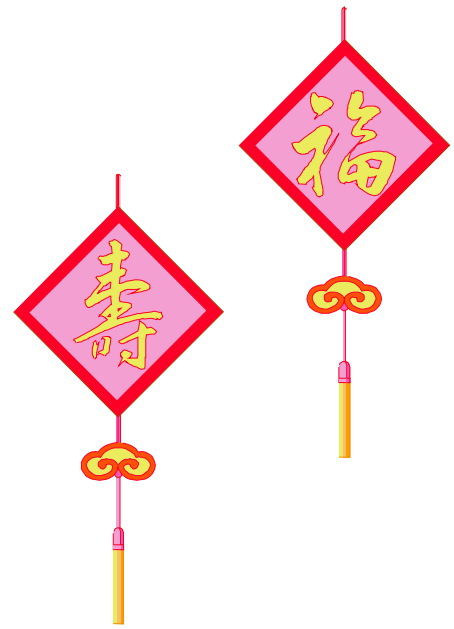
How could you find out about Music in Egyptian times?

What clues did the Ancient Egyptians leave us?

What instruments were found in the tomb of Tutankamen?

# Compose World 2

## Chinese Music



- Click on file
- Click Open Project
- Open the first folder “Compose”
- Choose ”Compose 4” Chinese

### Task

#### **Make up a tune using 8 phrases with percussion accompaniment**

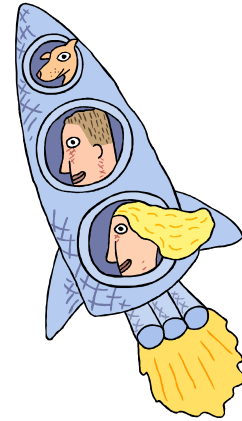
- Listen to all the phrases. Think about how your tune will start and end. You do not have to use all the phrases. Choose your favourite phrases.
- Create your tune. Listen to your tune. Does it have a good ending?
- Choose your percussion sounds carefully.
- You do not need to use all the percussion instruments! Try repeating your favourite sounds.
- You may want to change the instruments. Look in the instrument section.
- Do not forget to save your work.

Chinese music can be very gentle and calm.  
New Year celebrations, however, are often very loud.  
What instruments do the Chinese people use to help them celebrate the  
New Year?

# Compose World 2

## Space

- Click on file
- Click Open Project
- Open the folder “Story”
- Choose “rocket”



### Task

#### Make up a story about going to space in a rocket!

- Listen to all the phrases.
- Think about how your music will start and end.
- Create your music. You can repeat phrases if you wish.
- Listen to your music. Does it have a good ending?
- Do not forget to save your work.

Many composers have written music and songs inspired by the theme of space.  
Do you know any music linked to the theme of space?  
How could you find out?

# Compose World 2

## Create a moody piece!

- Click on file
- Click Open Project
- Open the folder “Moods”
- Choose “midnight”



## Task

### Make up a story based on the theme of Midnight.

- Listen to all the phrases.
- Think about how your music will start and end.
- Create your music. You can repeat phrases if you wish.
- Listen to your music. Does it have a good ending?
- Do not forget to save your work.
- Look in the sounds folder. Change some of the sounds in your music.
- Do you need to change the tempo? Do you need any rests?

What do you know about the music for the film Harry Potter?  
Do you know who wrote the music?  
How could you find out?

# Compose World 2

## Jumbles

- Click on file
- Click Open Project
- Open the folder “Jumbles”
- Choose “Picnic”



## Task

**Arrange the phrases to hear the tune Teddy Bears Picnic.**

- Think about how the tune starts. It may help to sing the song.

“If you go down into the woods today.....”